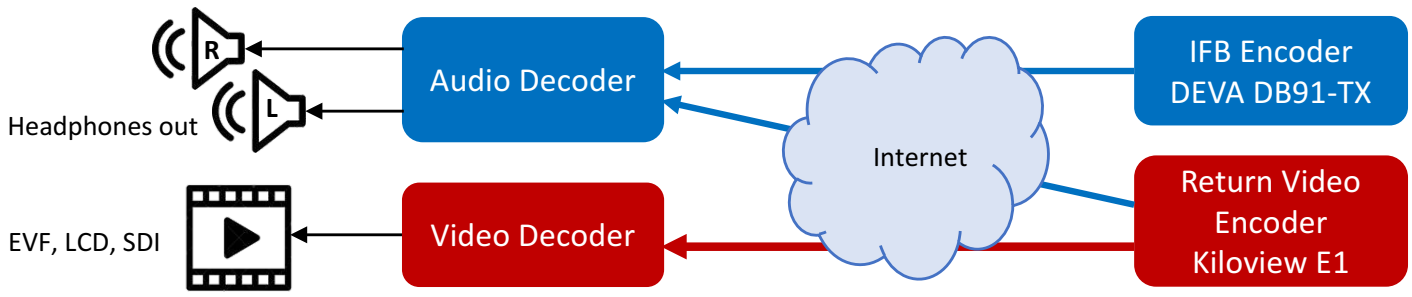
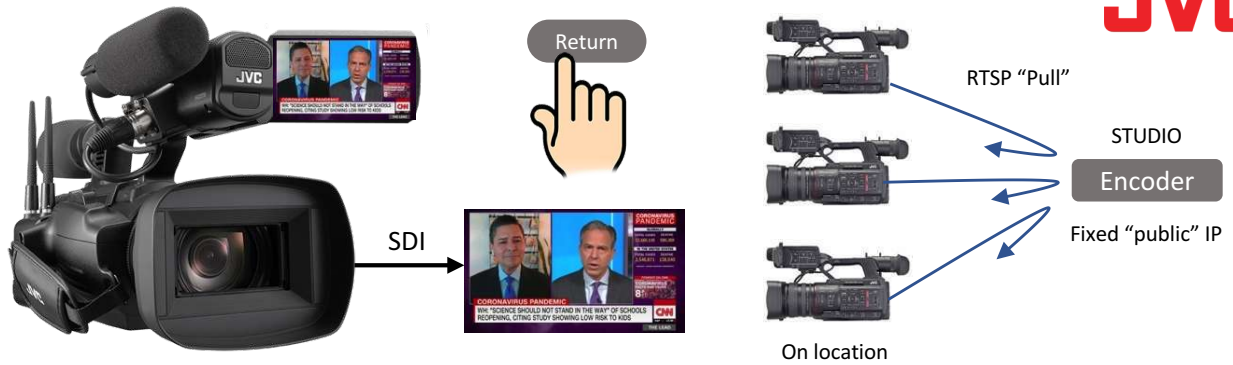
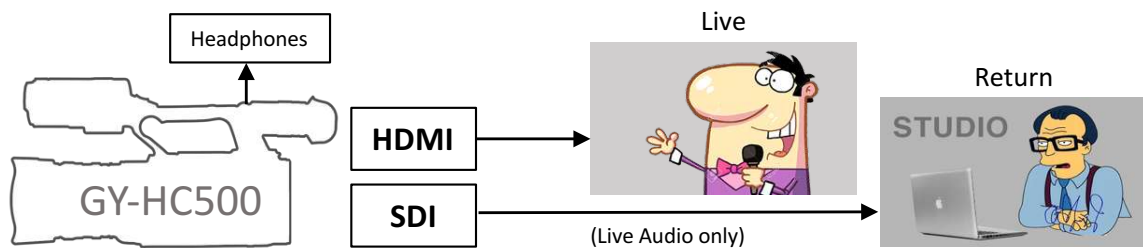


The GY-HC500/550/900 IFB and Return Video over the Internet

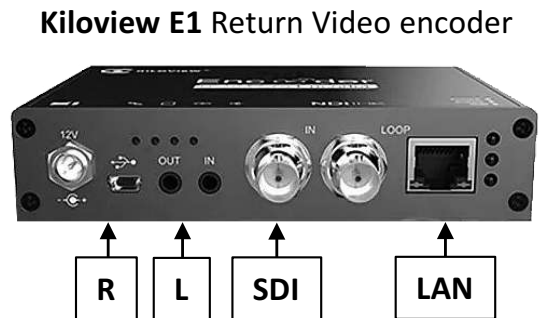
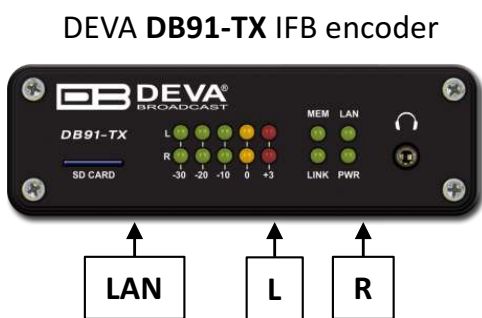
The Connected CAM series camcorders feature built-in IFB and Return Video decoders capable of receiving the H.264 stream over the Internet via RTSP "Pull" protocol (Return Video) and Icecast/Shoutcast streams for the IFB. Multiple cameras (up to 10) can "pull" the RTSP/Icecast streams from a single Return Video/IFB encoder. The camera can receive either IFB or Return Video, not both simultaneously. Return Video channel also includes two channels of audio (stereo), and Return Video audio channel(s) can be used for the IFB as well.



Return Video is displayed in the EVF/LCD and output via SDI when the pre-assigned button "Return Video" is pressed once. The second press would return the LCD/EVF/SDI to the live video output. The HDMI output does not switch to Return Video and outputs live video all the time. This allows using two monitors for simultaneous live and return video display.



For Return Video we recommend the **Kiloview E1 H.264 encoder** and for the IFB - **DEVA DB91-TX** IP audio encoder. The camera can memorize up to 4 Return/IFB servers to allow quick switching between sources in the field via the camera menu.

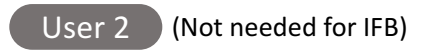


It is recommended to assign any two *User Buttons* for Return Video or IFB operation.

User 1 – to start/stop Return Video/IFB stream over the Internet.



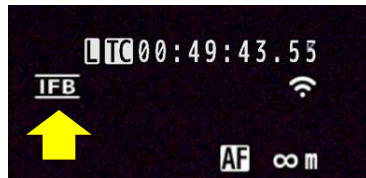
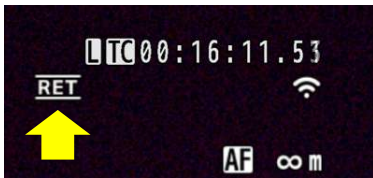
User 2 – to view Return Video in the EVF, LCD, and the SDI output.



Menu → Camera Function → USER Switch Set →

Pressing **User 1** starts the Return/IFB stream.

Symbol “RET” or “IFB” indicates that Return/IFB is available.



The headphones output can be set separately for L/R channels to play the mix of live audio and return (Auto), Return only, or no audio for return (Off).

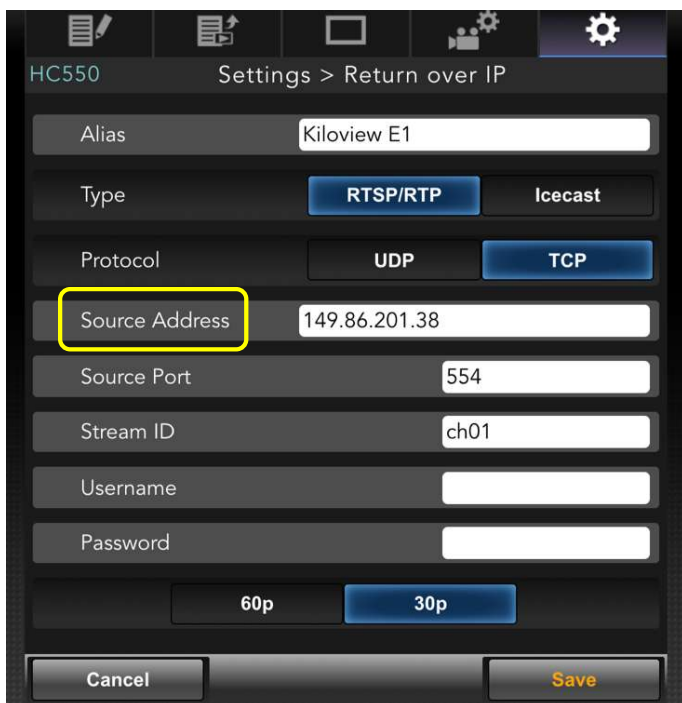
Menu → A/V Set → Audio Set → IFB/RET Monitor →

The GY-HC900 supports continuous (non switched) return video output via SDI-2 connector.

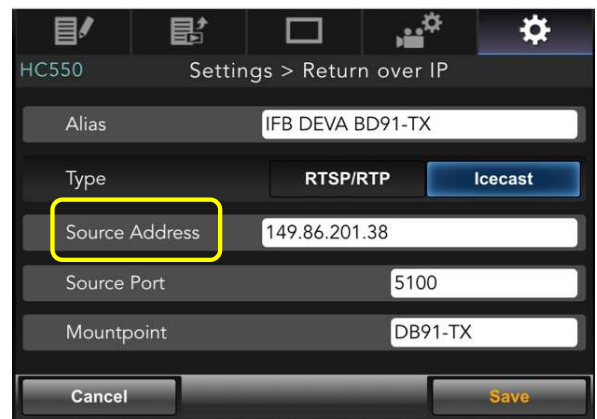


Camera setup:

Return Video



IFB



The **Source Address** is the "public" IP address of the encoder. The encoder installed at the studio must have fixed IP for cameras to "pull" the stream from. (Ports forwarding may be needed as well)

The Kiloview E1 encoder setup:

The GY-HC500/550/900 cameras return video decoder supports **1280x720 30/60p** H.264 stream up to **3 Mbps** with AAC audio over **RTSP** protocol.

Dashboard NDI User and Privileges Presets Developer System Information

Basic Settings +
Video&Audio Settings +
Encoding & Stream -

Audio Encoding Engine
Encoding & Stream Settings
SIP Settings

Network Storage (NAS)
Text & Image & Time Overlay +
Network & Service Settings +
Serial Port and PTZ +
Quick Reset
Logs & Debug
Reboot

System Information
Serial No.: 200140359
Hardware Ver.: 1.6.20
Firmware Ver.: 2.5.0
Software Ver.: 4.5.2310

Main Stream Encoder parameters

Scaling: 1280x720(16:9)

Color: Color

H.264 profile: High profile

Bitrate control: CBR - Constant bitrate

QP min value: 18

QP max value: 51

Bitrate: 2.0M bps

Bitrate auto adjust: Disabled

Frame Rate: Customized framerate

Customized framerate: 30 fps

Dynamic Frame Rate: Disabled

GOP Size: 30 - Produce one I frame per 30 frames

Reference frames: One
(Using multiple reference frames should give a better encoding quality but this setting may not be compatible with some decoders)

SAVE Return

Basic Settings +
Video&Audio Settings +
Encoding & Stream -

Audio Encoding Engine
Encoding & Stream Settings
SIP Settings

Network Storage (NAS)
Text & Image & Time Overlay +
Network & Service Settings +
Serial Port and PTZ +
Quick Reset

Main Stream RTSP service parameters

Service Port: 554
(For port changes to take effect, please reset or reboot the device)

HTTP Tunnel Port: 0
(NOTE: If the port is 0, HTTP tunnel is disabled. Ensure the port value is not the same as the Web service or Onvif service ports. For port changes to take effect, please reset or reboot the device)

Session ID: ch01

For AAC(MPEG4) Audio: Drop the ADTS header

RTSP Authorization: Disable

RTSP Multicast: Disable

SAVE Return

The Return Video latency is ~ 1 sec.

The DEVA DB91-TX IP audio encoder setup:

DB91-TX - Compact IP Audio Encoder Configuration

IN: Analog (Main Analog) 29 Sep 2020 01:11:33 Uptime: 0d 02:11:28 Session: 02:32 [Logout](#)


Inputs

Digital	Analog
0 -10 -20 -30 -50 -70	-12.4 -12.8 0 -10 -20 -30 -50 -70

Active connections

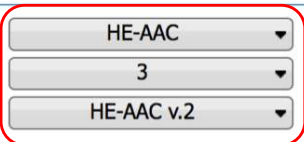
Type	Status	Remote Peer	Codec
------	--------	-------------	-------

General

Sample rate: 

Channels:

Encoder 1

Type: 

Quality:

Version:

Encoder 2

Type:

Quality:

Stereo Mode:

CRC:

Emphasis:

[Status](#)

[Input](#)

Encoding

[IP Audio](#)

[General](#)

[Network](#)

[Other](#)

DB91-TX - Compact IP Audio Encoder Configuration

IN: Analog (Main Analog) 29 Sep 2020 01:12:24 Uptime: 0d 02:12:19 Session: 02:51 [Logout](#)

Inputs


Digital	Analog
0 -10 -20 -30 -50 -70	-10.3 -11.8 0 -10 -20 -30 -50 -70

Active connections

Type	Status	Remote Peer	Codec
------	--------	-------------	-------

IP Audio Server

Encoder:

Port: 

Pre-buffer: s

Max clients:

IP Audio Sender 1

Encoder:

Type:

[Status](#)

[Input](#)

[Encoding](#)

IP Audio

[General](#)

[Network](#)


[Other](#)

DB91-TX - Compact IP Audio Encoder Configuration

Security

User: <input type="text" value="admin"/>	User: <input type="text" value="user"/>
Pass: <input type="password" value="...."/>	Pass: <input type="password" value="...."/>

General

Alias: 

WEB Log

Max age:

Date & Time

Date:

Time:

Time zone:

[Copy Local Time](#)

Sntp Internet Time

Enable: Enabled Disabled

Server:

Server Port:

[Status](#)

[Input](#)

[Encoding](#)

[IP Audio](#)

General

[Network](#)

[Other](#)

The IFB latency is ~ 0.7 sec